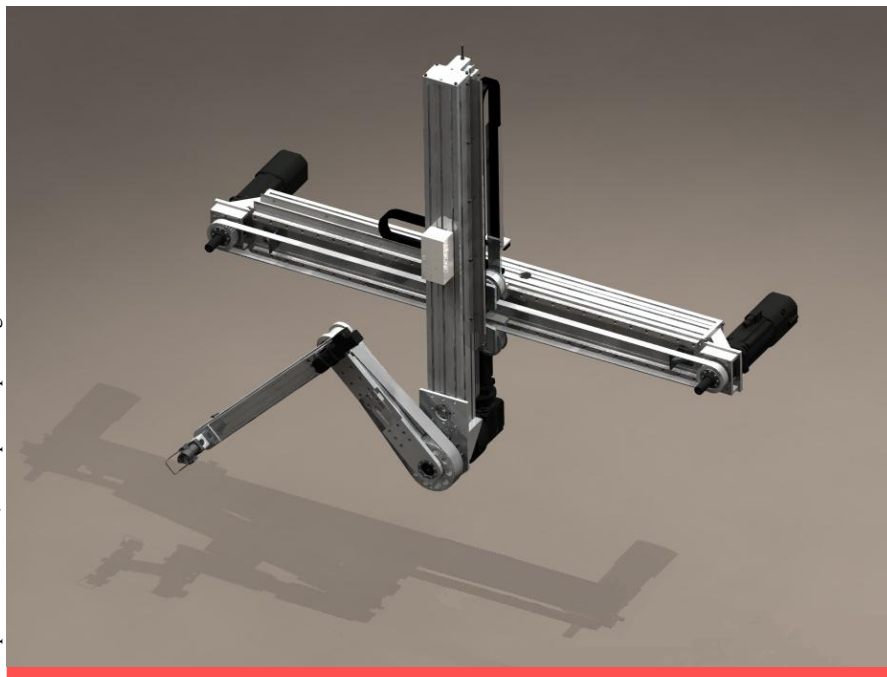




# OLOFSTRÖM

## UNIFEEDER



## PRESS AUTOMATION

### UNIFEEDER PTP

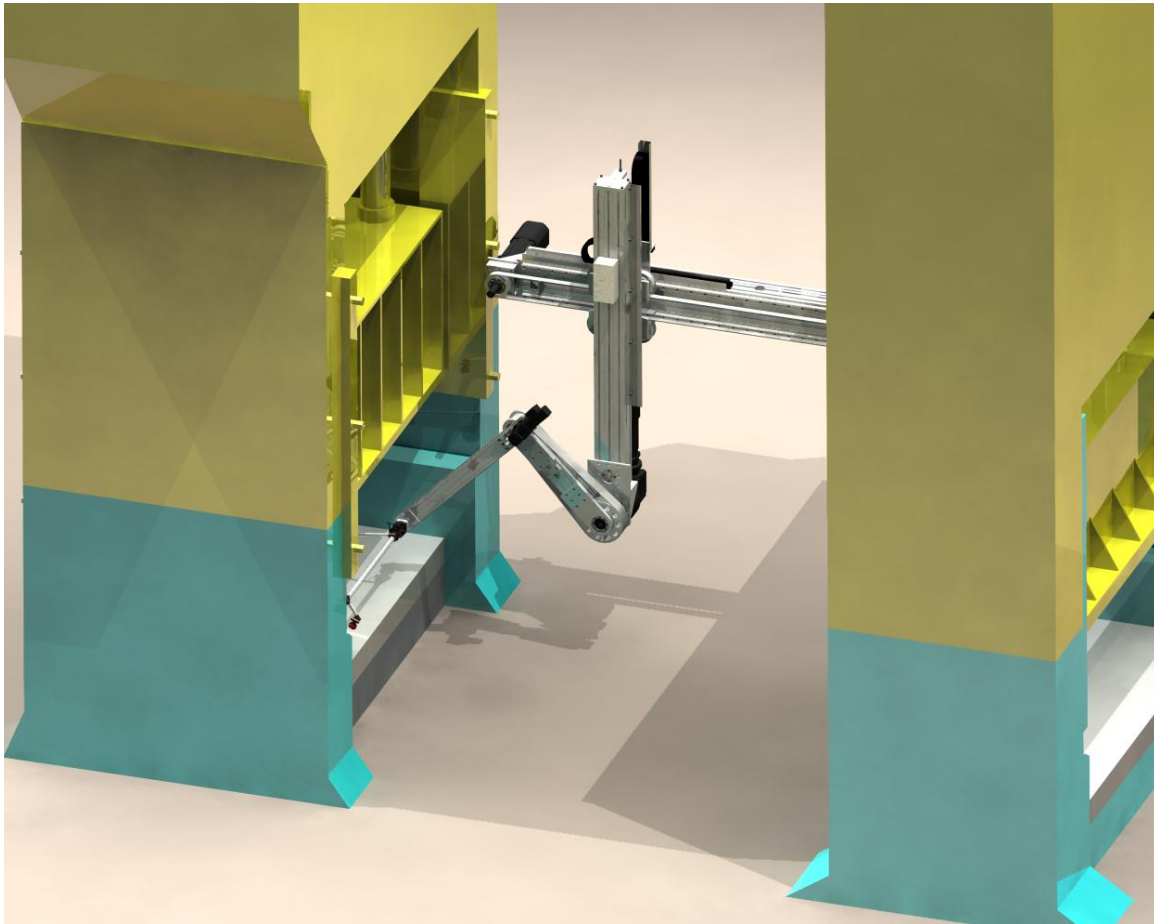
- **Fast and smooth movements, this means higher speed of motion, increased production rate.**
- **Press To Press handling with single or double UniFeeder PTP.**
- **Turnover capabilities.**
- **Side movement with optional axis.**
- **Simple and solid construction, less need for maintenance.**
- **Optimisation during running production.**
- **The UniFeeder PTP solution leaves a free floor space between the presses.**

## UniFeeder PTP

UniFeeder PTP is a four-axis freely programmable press automation equipment. Optional up to five axis per UniFeeder PTP. Fast and smooth movements, qualities necessary for keeping a high and steady production rate.

The smoothness of the movements comes from the unique operation control, developed especially for transferring different types of parts.

The UniFeeder PTP solution leaves a free floor space between the presses.



### Technical Data and Capacity UniFeeder PTP

Load per UniFeeder PTP ( including tooling )	max	90 kg
Stroke length horizontal ( x-axis )	max	12 m
Stroke length vertical ( z-axis )	max	2 m



**OLOFSTRÖM**

**UNIFEEDER**

**Different ways to use single and/or double UniFeeder PTP**



UniFeeder PTP with single or double tooling.



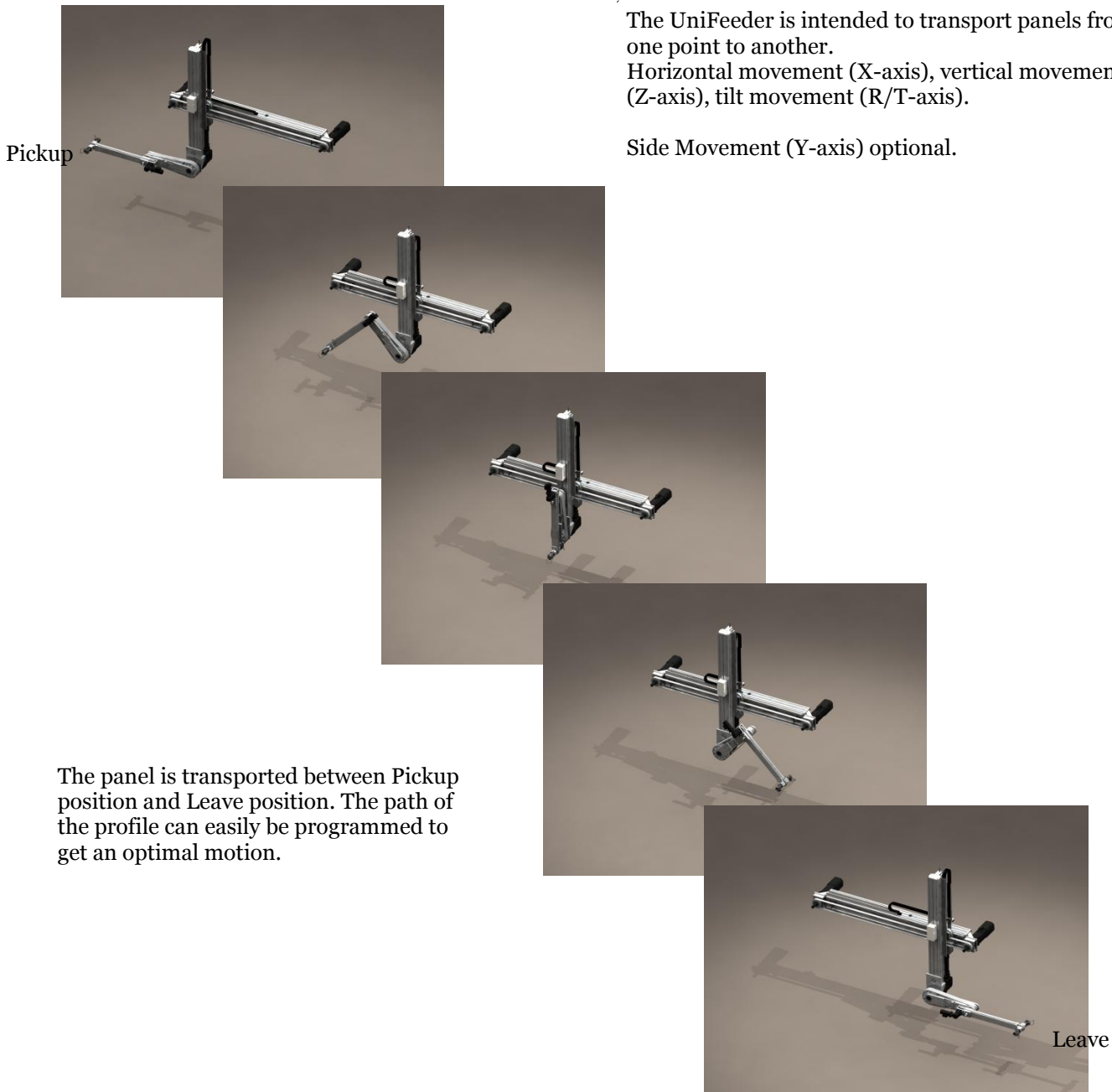
Double UniFeeder PTP with crossbar tooling.



Double UniFeeder PTP for turning the panel.



## Functional Principle



The UniFeeder is intended to transport panels from one point to another.

Horizontal movement (X-axis), vertical movement (Z-axis), tilt movement (R/T-axis).

Side Movement (Y-axis) optional.

The panel is transported between Pickup position and Leave position. The path of the profile can easily be programmed to get an optimal motion.

Edition 1.2 eng